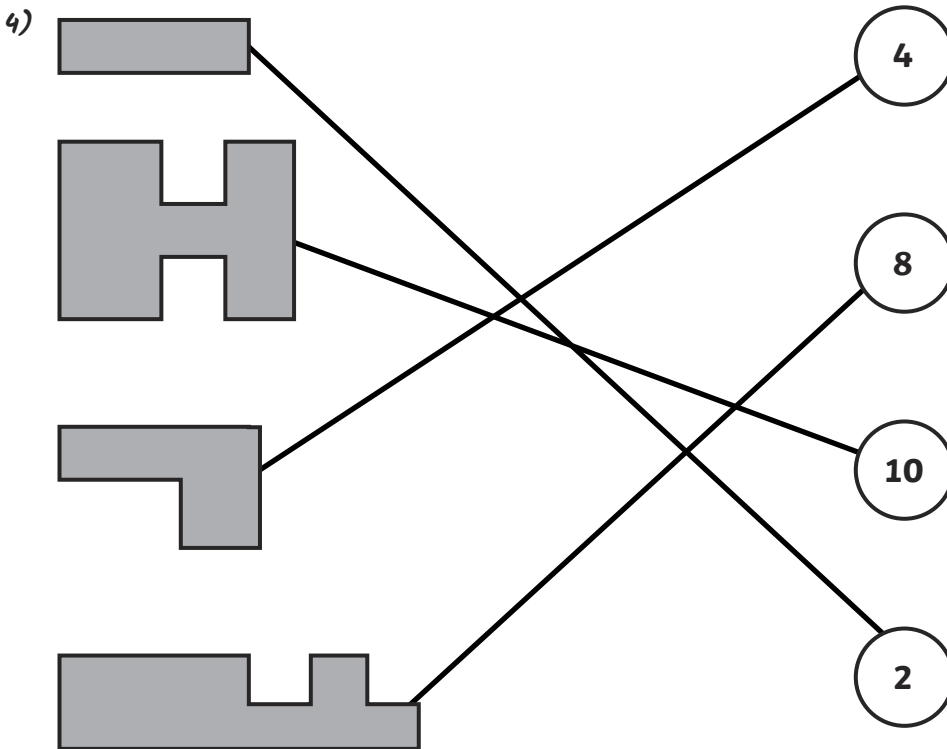


3) C, D, A, B



1) *False. Perimeter is the distance around the outside of a shape. Area is the amount of space taken up by a shape or the space 'inside' a shape.*

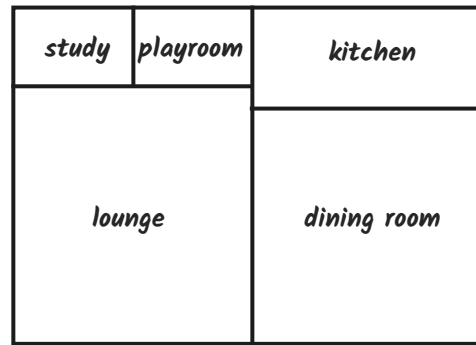
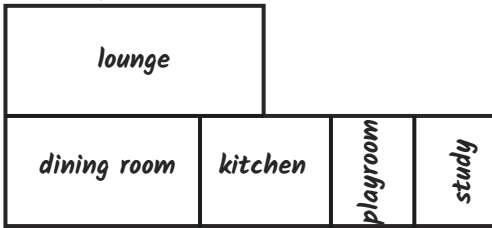
2) *Sara is correct. The two shapes are exactly the same, but one has been rotated. The space inside the shape does not change when we rotate the shape.*

3) *Annabel and Emile will get a different answer because the larger square takes up more space so less of these will be needed to cover the table. The smaller squares take up less space so more of these will be needed to cover the table.*





1) Answers will vary. Accept any answers where it is clear to see that the largest room is the lounge, followed by the dining room, the kitchen, and then the study and playroom. Here are some example answers:



- 2) Megan is wrong. Although the sides are different lengths, the shapes could still cover the same amount of space, which would mean that they have the same area.
- 3) Answers will vary. Children should show understanding that the rubber is too small and the plate is round so would be difficult to measure using square sticky notes. Although it would be possible to measure the door with squares, this would take a long time as it is a large surface. Therefore, the book would be the best object to measure using square sticky notes.