

Year 5 & 6 Knowledge Organiser – Animals—Faster Higher Stronger

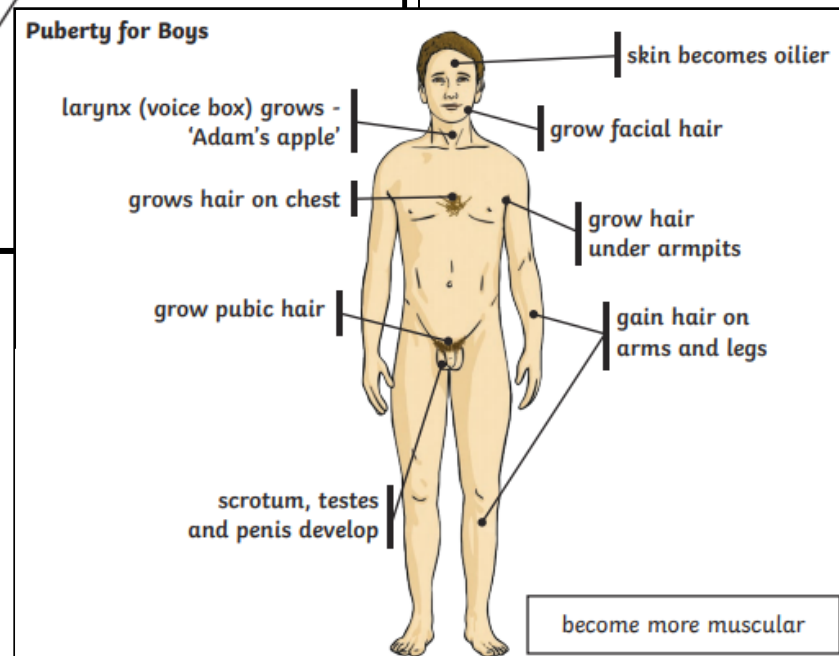
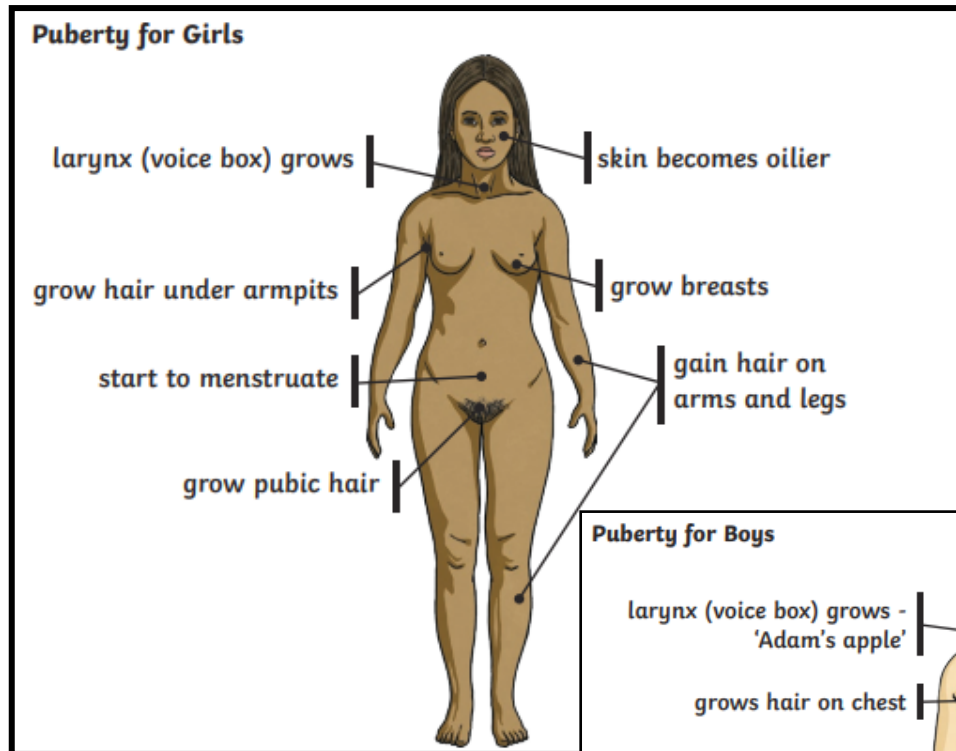
What should I already know?

Which things are living and which are not.
 Classification of animals (e.g. amphibians, reptiles, birds, fish, mammals, invertebrates) Animals that are carnivores, herbivores and omnivores. Animals have offspring which grow into

Key vocabulary

fertilisation	The process of the female and male sex cells fusing together
gestation	The processor time when prenatal development takes place before birth
prenatal	The stage of development from the time of fertilisation to the time of birth
reproduce	To produce young
life cycle	Changes a living thing goes through, including reproduction.
adolescence	The social and emotional stage of development between child and adulthood
puberty	The physical stage of development between childhood and adulthood

Diagrams



Grow Taller

All parts of the body grow

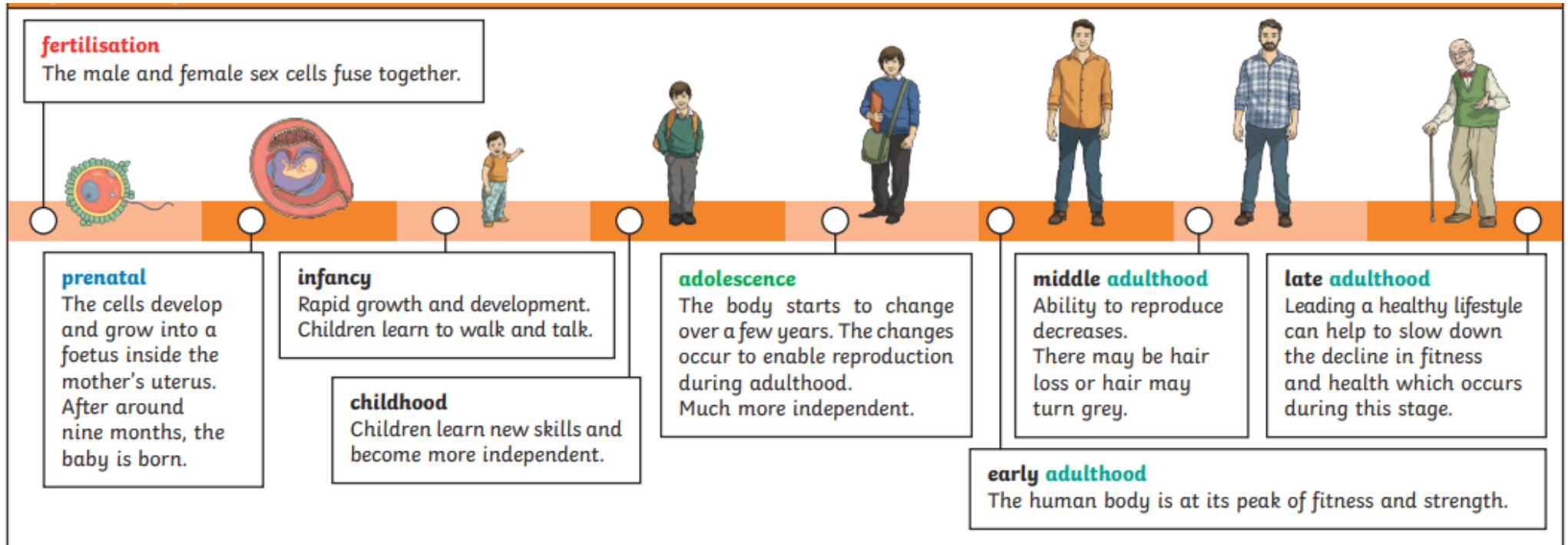
Sweat glands produce more sweat

What will I know by the end of the unit?

Describe the changes as humans develop to old age.

Animals are alive; they move, feed, grow, use their senses, reproduce, breathe/respire and excrete.

Diagrams



Topic—Animals—Human Life Cycles
Faster Higher Stronger

Question 1—What is puberty?	Start of unit	End of unit	Question 4 - Name three things that happen during puberty.	Start of unit	End of unit
A. The physical stage of development between 5 and 6 year olds			<div style="border-left: 1px solid black; border-right: 1px solid black; height: 100%;"></div>		
B. The physical stage of development between 20 and 30 year olds					
C. The physical stage of development between childhood and adulthood					
Question 2 - Place these in order in which they happen using numbers 1-4.	Start of unit	End of unit	Question 5 - Which life process happens when adults produce offspring?	Start of unit	End of unit
A. adolescent			A. growth		
B. new born			B. reproduction		
C. adulthood			C. movement		
D. toddler			D. nutrition		
Question 3 - What is fertilisation ?	Start of unit	End of unit	Question 6 - How many weeks do humans generally carry a baby for?	Start of unit	End of unit
A. The process of the female and male sex cells fusing together			A. 16 weeks		
B. The process of the female and male sex cells moving apart			B. 9 weeks		
C. The process of the female and male growth cells fusing together			C. 40 weeks		
			D. 52 weeks		