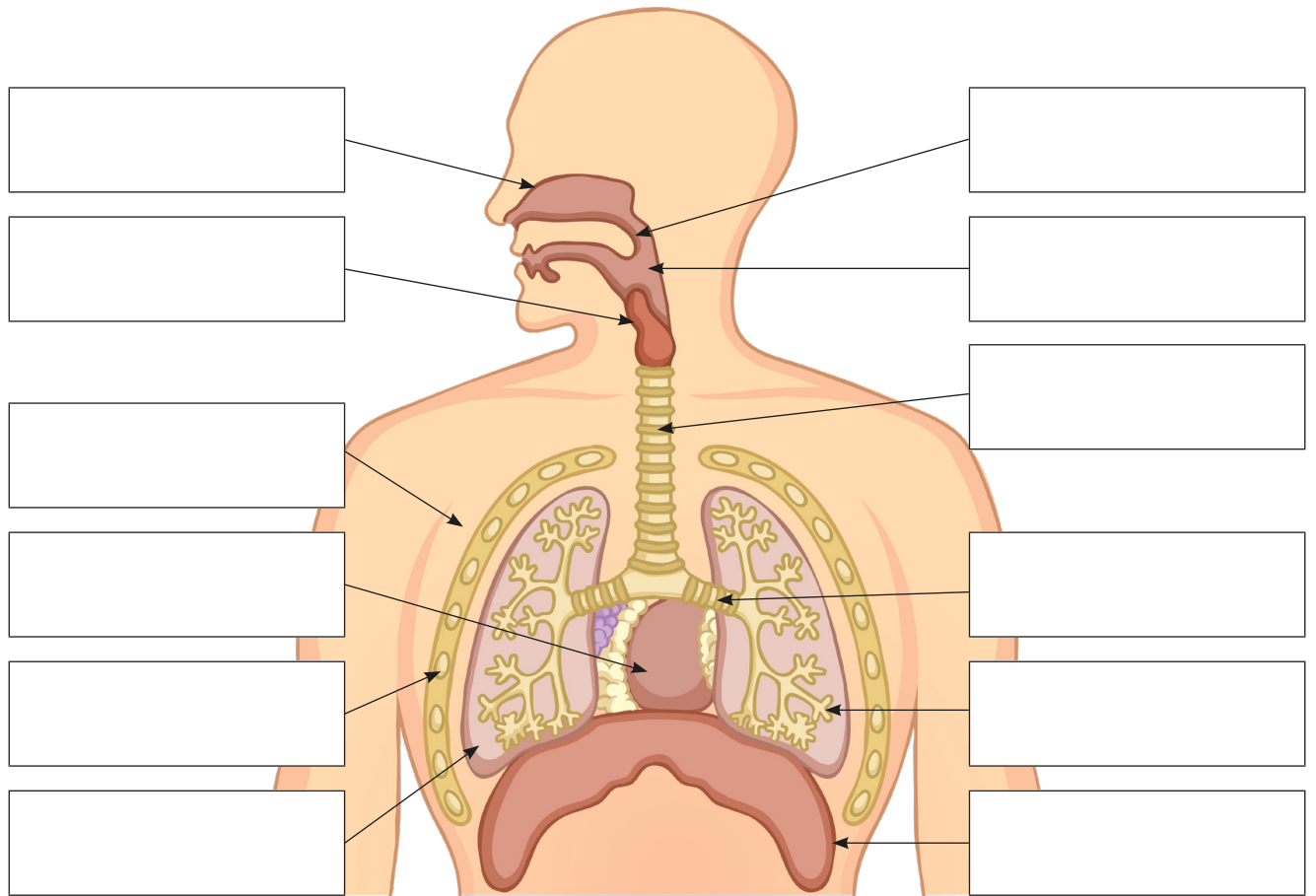




# Structure and Function of the Gas Exchange System

## Cut and Stick



Name	Role
<input type="text"/>	<input type="text"/>
<input type="text"/>	<input type="text"/>
<input type="text"/>	<input type="text"/>
<input type="text"/>	<input type="text"/>



Some of the boxes below contain labels to complete the diagram. Others contain names and functions to complete the chart.

Cut out all the cards and stick them in their correct places on the diagram and the chart.

<b>intercostal muscle</b>	<b>rib</b>	<b>rib</b>
<b>larynx</b>	<b>heart</b>	<b>diaphragm</b>
<b>bronchus</b>	<b>oesophagus</b>	<b>nasal cavity</b>
<b>air sacs (alveoli)</b>	<b>air sacs (alveoli)</b>	<b>trachea</b>
<b>lung</b>	<b>trachea</b>	<b>diaphragm</b>
<b>soft palate</b>		

**Protects the lungs.**

**A muscle that moves to help get air in and out of the lungs.**

**Part of the lungs where gas exchange occurs.**

**Air that is inhaled passes through here to the bronchi and into the lungs.**